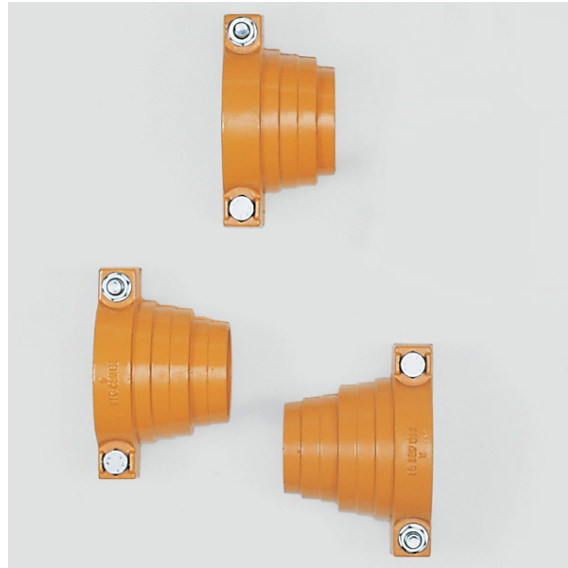


Technology for cable laying and overhead power lines

- Energy cable laying up to 680 kV
- Fibre optic, mini and micro cables
- Cable winding and length measuring
- Overhead line construction up to 110 kV
- Seminars and product instructions



Locating cones



Locating cone for drum shafts made of cast steel including clamp. With several steps for drum bores according to DIN.

Code	Type	For shaft	Steps-D	kg
315430	ZKO 76	D 75-76	140/130/125/105/100/90	5,50
315460	ZKO 90	D 89-90	140/130/125/105/100	4,80
315490	ZKO 95	D 94-95	140/130/125/105	4,50